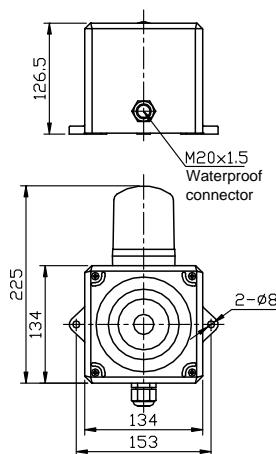




Mounting dimension ( Unit:mm )



Wiring diagram

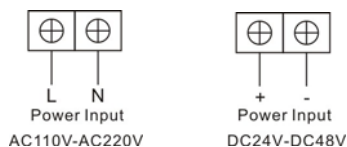


Diagram I

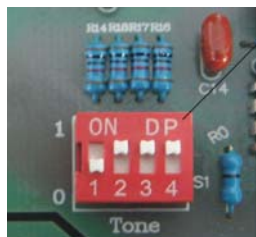


Diagram II

Volume selection:  
Use DIP switch to select tone (16 types) on power off condition.

Application



### Applications

Specially design for all kinds of harbors machinery, electrical and mechanical industry, large and medium-sized vehicle and ship, dock equipment.

### Main Functions and features

- Various tones available for selection.
- Ease of using, can work long hours.
- Specific integrated chip design, Good anti-RF.
- Flash microcontroller specially made by the inner core, the number of flashes per second can be formulated according to customer demand.
- Various combinations configuration, system application flexibility.
- Good structural design, ease of operation.
- ABS housing, anti-UV, anti-aging ingredients, salt corrosion resistance, Unique design ensure waterproof, moisture resistance, and shockproof functions.

### Specifications

|                       |   |               |           |
|-----------------------|---|---------------|-----------|
| Operating voltage     | AC110V~AC240V/DC24V<br>( optional )       | Frequency     | 50Hz~60Hz |
| Tone                  | Various ( optional )                      | Power         | 10W       |
| Horn impedance        | 8Ω  | Sound level   | 108dB     |
| Warning type          | Visible & Audible                         | Base color    | Red       |
| LED color             | Red, yellow, blue, green ,white(optional) |               |           |
| Operating temperature | -30°C ~ +70°C                             | IP Protection | IP65      |
| Relative humidity     | 10% ~ 95% (no condensing )                | Weight        | 1Kg       |
| Material              | Main body: ABS Housing: PC                |               |           |

### Installation and Operation

- Check whether the operating voltage complies with the rated voltage of the siren.
- Secure the alarm body on a smooth surface with enough mechanical strength using two M6 stainless steel screws. Mounting surface should be in a line with the axes of lamp body.
- Follow the wiring diagram of Figure I. connect the power line, check before turning on the power switch.
- Turn off the power supply before adjust the alarm tone, toggle circuit board in the DIP switch to select tone.
- Select the corresponding tone in the throw DIP switch to "on" position, please dial the other switch should be set to "off" position, (see wiring diagram figure II).

### Select table

| Model | Tone        |
|-------|-------------|
| AL001 | Multi-tone  |
| AL002 | Single-tone |

### Notice

- The part of material of products is PC( like lamp cover and lamp shell ), so it cannot direct or indirect touch the organic solvent, such as industrial alcohol, banana oil, isopropyl alcohol, carbon tetrachloride, cyclohexanone and so on, otherwise, the product will be corrosion.
- This product can be used in indoor, outdoor and ship, Please read the instruction manual carefully before operation.
- Control box warming is normal.
- Do not install the bell facing up to avoid accumulation of water.
- Do not open the case. Any questions, please contact us.